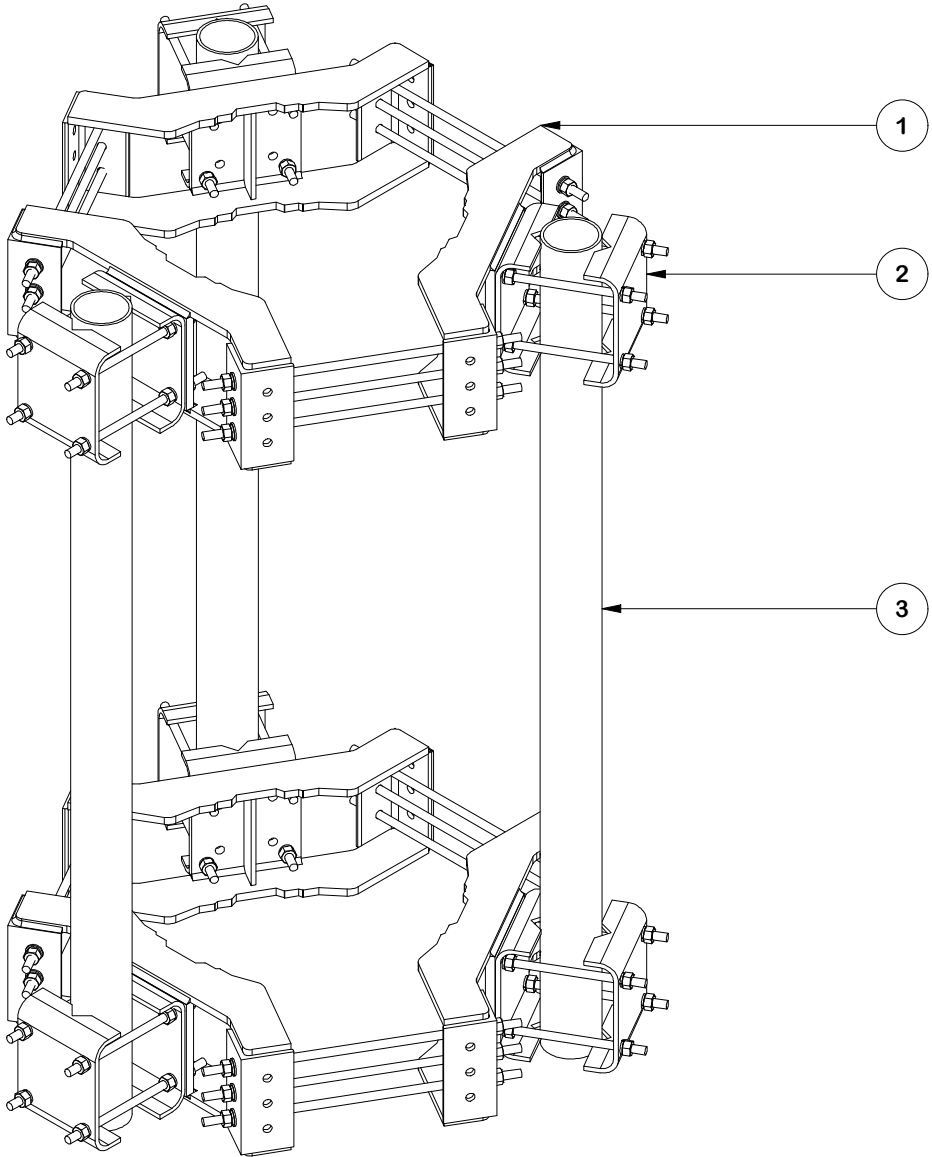

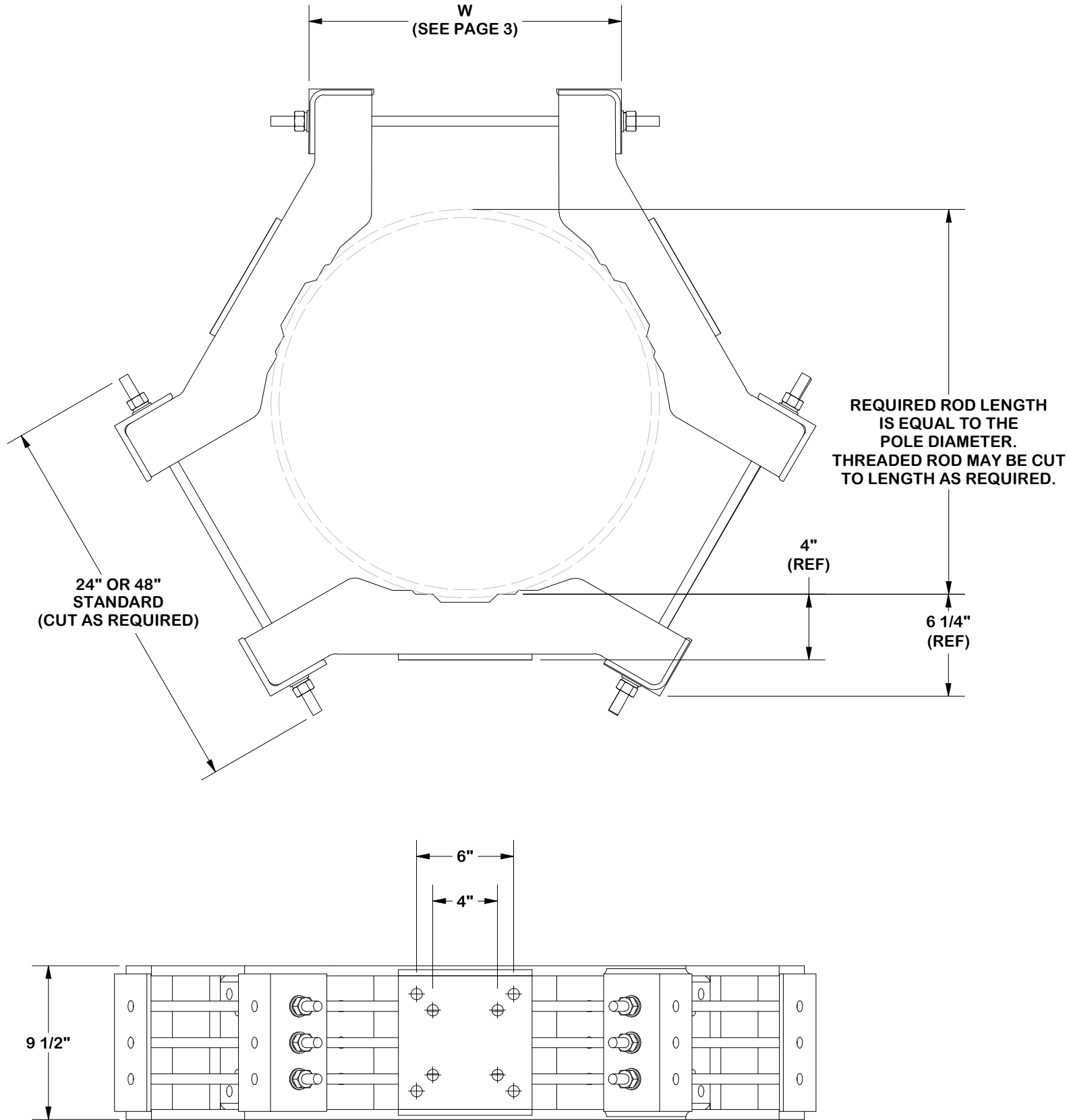


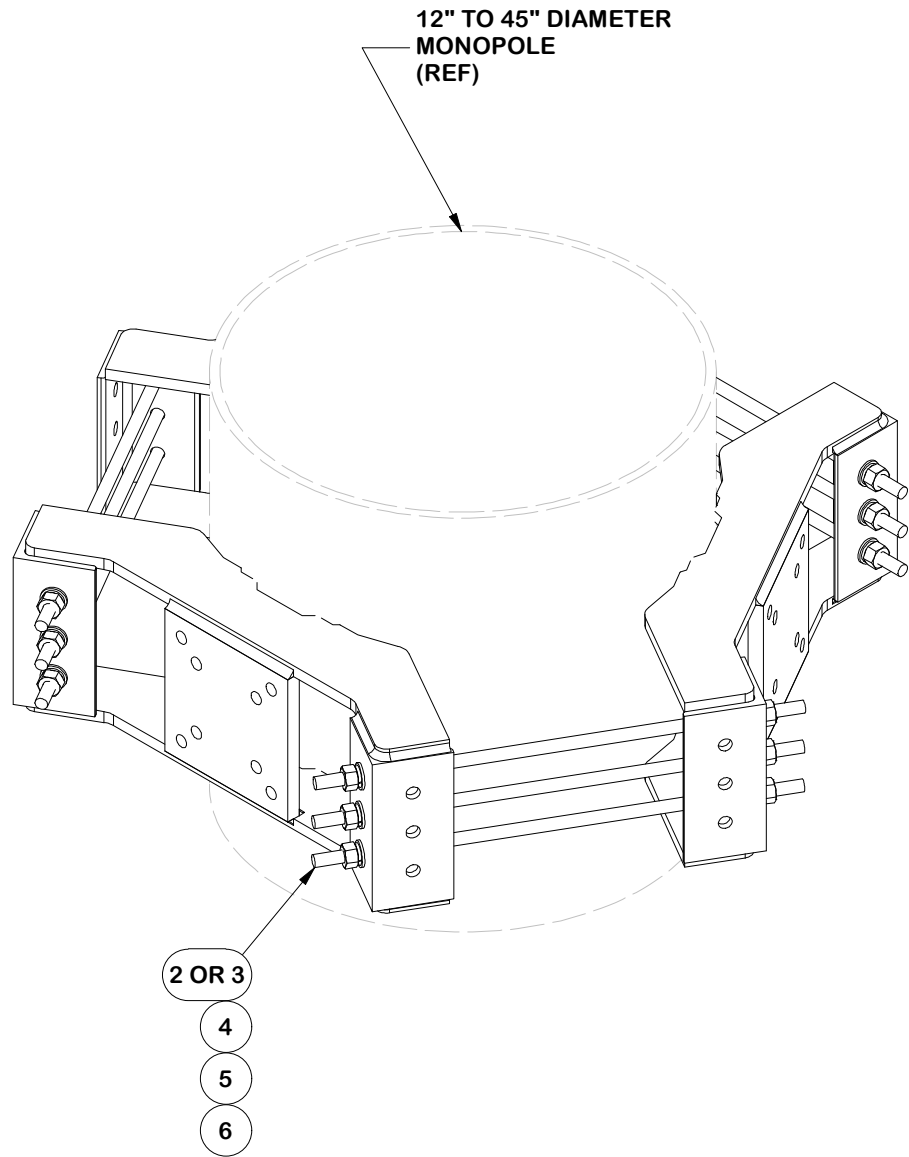
PARTS LIST						
ITEM	QTY	PART NO.	PART DESCRIPTION	LENGTH	UNIT WT.	NET WT.
1	2	LWRM	UNIVERSAL RING MOUNT		266.30	532.59
2	3	FMA2	FLUSH MOUNT ADAPTER DUAL LEVEL		61.51	184.52
3	3	P472	4-1/2" X 72" SCH. 40 GALVANIZED PIPE (Fy = 35 ksi min.)	72 in	64.81	194.43
TOTAL WT. #					788.53	



					TOLERANCE NOTES TOLERANCES ON DIMENSIONS, UNLESS OTHERWISE NOTED ARE: SAWED, SHEARED AND GAS CUT EDGES ($\pm 0.030''$) DRILLED AND GAS CUT HOLES ($\pm 0.030''$) - NO CONING OF HOLES LASER CUT EDGES AND HOLES ($\pm 0.010''$) - NO CONING OF HOLES BENDS AND ANGLES ARE $\pm 1/2$ DEGREE ALL OTHER MACHINING ($\pm 0.030''$) ALL OTHER ASSEMBLY ($\pm 0.060''$)		<div>DESCRIPTION</div> <div>MONOPOLE SECTOR FRAME ATTACHMENT ASSEMBLY</div>			<div><div><div>SITE PRO</div><div>1</div></div><div>Engineering Support Team: sp1engineering@valmont.com</div></div> <div>A valmont  COMPANY</div>							
A	UPDATED ASSEMBLY REPRESENTATIONS			SP1	CSL	9/5/2024	PATENT INFORMATION: WWW.SITEPRO1.COM/PATENTS			CPD NO.	DRAWN BY		ENG. APPROVAL		PART NO.		1 OF 7 PAGE
REV	DESCRIPTION OF REVISIONS			CPD	BY	DATE	PROPRIETARY NOTE: THE DATA AND TECHNIQUES CONTAINED IN THIS DRAWING ARE PROPRIETARY INFORMATION OF VALMONT INDUSTRIES AND CONSIDERED A TRADE SECRET. ANY USE OR DISCLOSURE WITHOUT THE CONSENT OF VALMONT INDUSTRIES IS STRICTLY PROHIBITED.			CLASS	SUB	DRAWING USAGE		CHECKED BY		DWG. NO.	
REVISION HISTORY										87	02	SHOP		JET 9/5/2024		MSFAA	

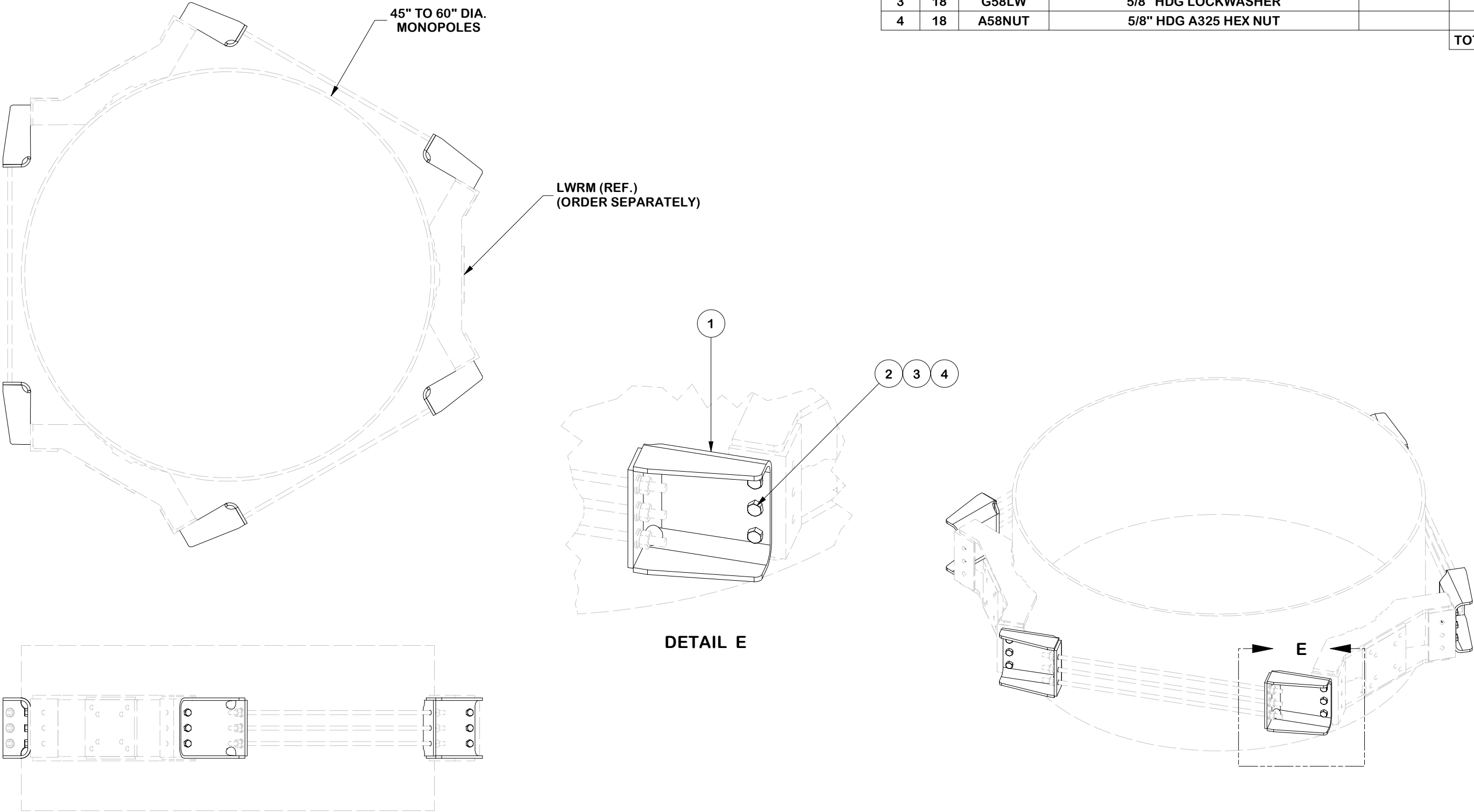



PARTS LIST					
ITEM	QTY	PART NO.	PART DESCRIPTION	LENGTH	UNIT WT.
1	3	X-LWRM	RING MOUNT WELDMENT		68.81
2	9	G58R-48	5/8" x 48" THREADED ROD (HDG.)		4.18
3	9	G58R-24	5/8" x 24" THREADED ROD (HDG.)		2.09
4	18	A58FW	5/8" HDG A325 FLATWASHER		0.03
5	18	G58LW	5/8" HDG LOCKWASHER		0.03
6	18	A58NUT	5/8" HDG A325 HEX NUT		0.13
TOTAL WT. #					264.35



							<div>TOLERANCE NOTES</div> <div>TOLERANCES ON DIMENSIONS, UNLESS OTHERWISE NOTED ARE: SAWED, SHEARED AND GAS CUT EDGES ($\pm 0.030''$) DRILLED AND GAS CUT HOLES ($\pm 0.030''$) - NO CONING OF HOLES LASER CUT EDGES AND HOLES ($\pm 0.010''$) - NO CONING OF HOLES BENDS AND ANGLES ARE $\pm 1/2$ DEGREE ALL OTHER MACHINING ($\pm 0.030''$) ALL OTHER ASSEMBLY ($\pm 0.060''$)</div>				<div>DESCRIPTION</div> <div>MONOPOLE SECTOR FRAME ATTACHMENT ASSEMBLY</div>				<div><div><div>SITE PRO 1</div><div>Engineering Support Team: sp1engineering@valmont.com</div></div><div>A valmont COMPANY</div></div>				
B	UPDATED TEMPLATE					SP1	CSL	9/5/2024		CPD NO. SP1		DRAWN BY CMFL 9/5/2024		ENG. APPROVAL 9/5/2024		PART NO. LWRM		PAGE 2 OF 7	
A	REDRAWN IN INV, UPDATED TABLES AND VIEW					SP1	KC8	7/25/2012		PATENT INFORMATION: WWW.SITEPRO1.COM/PATENTS									
REV	DESCRIPTION OF REVISIONS					CPD	BY	DATE		PROPRIETARY NOTE: THE DATA AND TECHNIQUES CONTAINED IN THIS DRAWING ARE PROPRIETARY INFORMATION OF VALMONT INDUSTRIES AND CONSIDERED A TRADE SECRET. ANY USE OR DISCLOSURE WITHOUT THE CONSENT OF VALMONT INDUSTRIES IS STRICTLY PROHIBITED.									
REVISION HISTORY																			

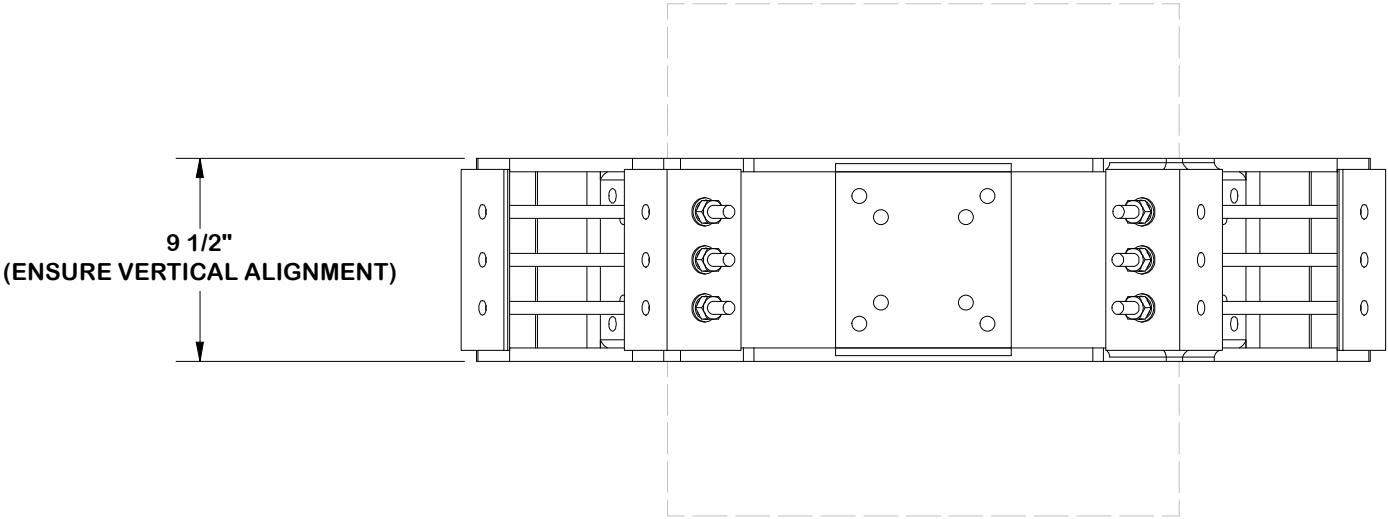
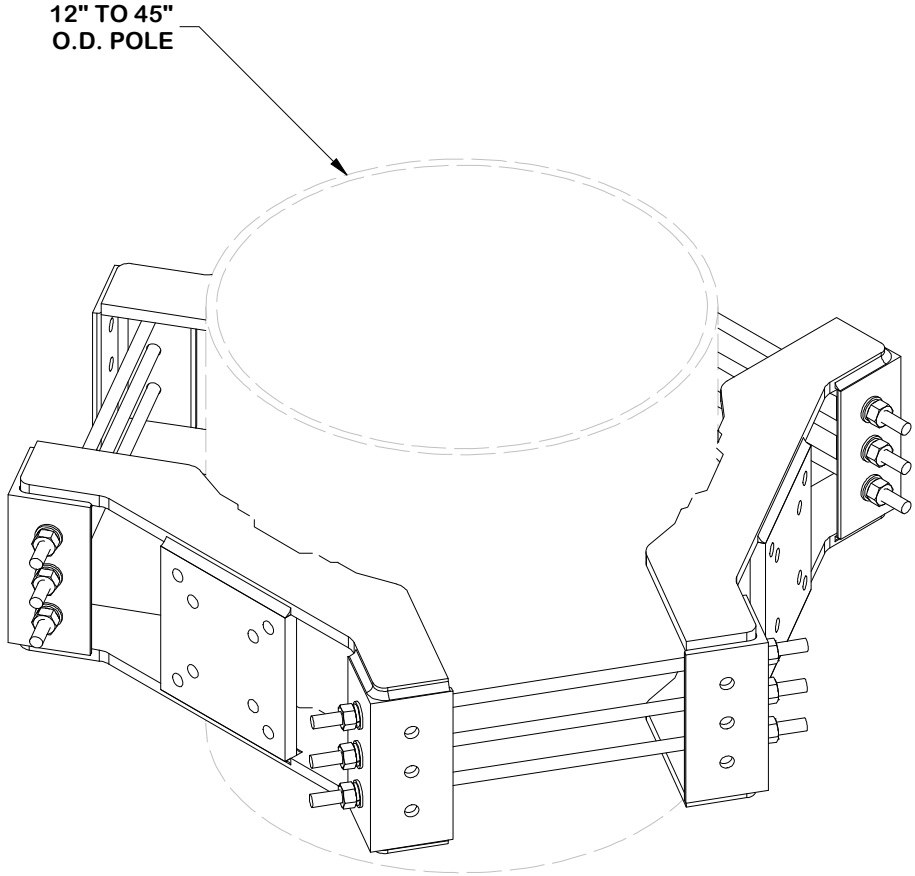
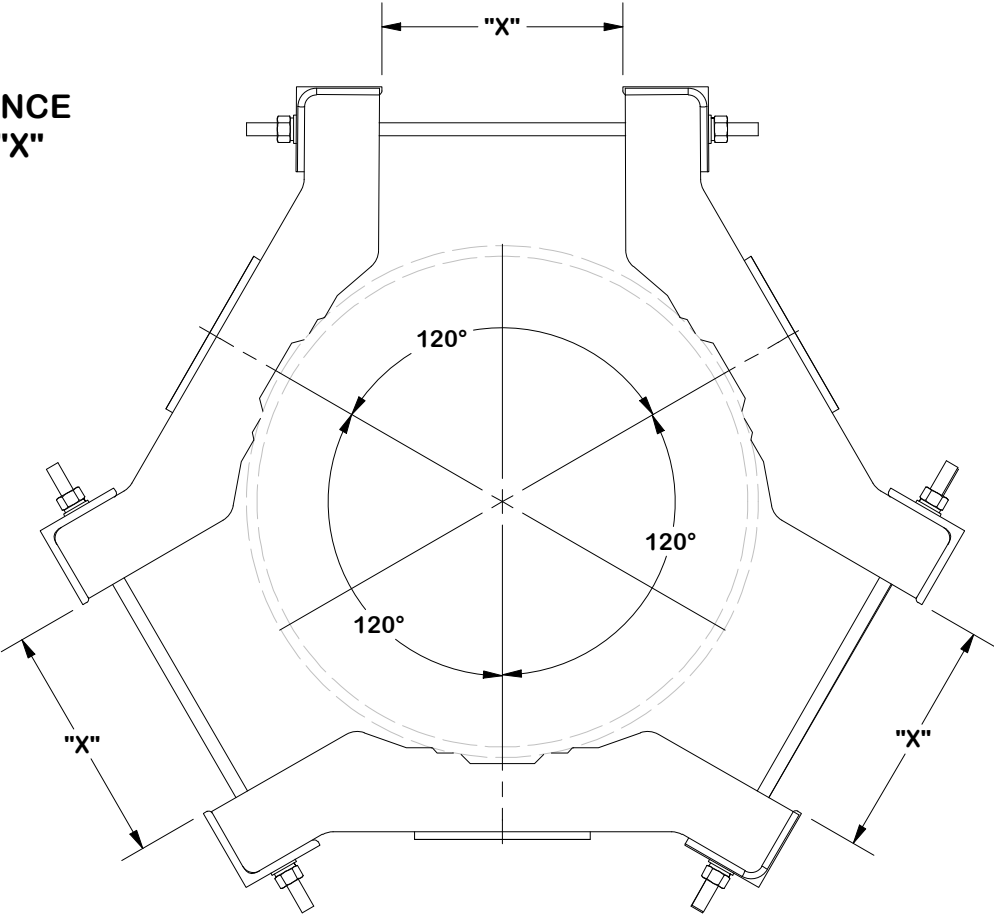
PARTS LIST					
ITEM	QTY	PART NO.	PART DESCRIPTION	LENGTH	UNIT WT.
1	6	X-178627	BENT EXTENSION BRACKET	15 in	15.80
2	18	A5802	5/8" x 2" HDG A325 HEX BOLT		0.27
3	18	G58LW	5/8" HDG LOCKWASHER		0.03
4	18	A58NUT	5/8" HDG A325 HEX NUT		0.13
TOTAL WT. #					105.90




					<div>TOLERANCE NOTES</div> <div>TOLERANCES ON DIMENSIONS, UNLESS OTHERWISE NOTED ARE: SAWED, SHEARED AND GAS CUT EDGES ($\pm 0.030''$) DRILLED AND GAS CUT HOLES ($\pm 0.030''$) - NO CONING OF HOLES LASER CUT EDGES AND HOLES ($\pm 0.010''$) - NO CONING OF HOLES BENDS AND ANGLES ARE $\pm 1/2$ DEGREE ALL OTHER MACHINING ($\pm 0.030''$) ALL OTHER ASSEMBLY ($\pm 0.060''$)</div>		<div>DESCRIPTION</div> <div>MONOPOLE SECTOR FRAME ATTACHMENT ASSEMBLY</div>			<div><div><div>SITE PRO</div><div>1</div></div><div>Engineering Support Team: sp1engineering@valmont.com</div></div> <div>A valmont  COMPANY</div>				
B	UPDATED TEMPLATE				SP1	CSL	9/5/2024	CPD NO.	DRAWN BY		ENG. APPROVAL	PART NO.	3 OF 7 PAGE	
A	REDRAWN IN INV, UPDATED TABLES AND VIEW				SP1	KC8	7/25/2012	SP1		CMFL 9/5/2024	9/5/2024	RM-ADK		
REV	DESCRIPTION OF REVISIONS				CPD	BY	DATE	CLASS	SUB	DRAWING USAGE	CHECKED BY	DWG. NO.		
REVISION HISTORY								87		02	SHOP	JET 9/5/2024		MSFAA
								PATENT INFORMATION: WWW.SITEPRO1.COM/PATENTS						
								PROPRIETARY NOTE: THE DATA AND TECHNIQUES CONTAINED IN THIS DRAWING ARE PROPRIETARY INFORMATION OF VALMONT INDUSTRIES AND CONSIDERED A TRADE SECRET. ANY USE OR DISCLOSURE WITHOUT THE CONSENT OF VALMONT INDUSTRIES IS STRICTLY PROHIBITED.						

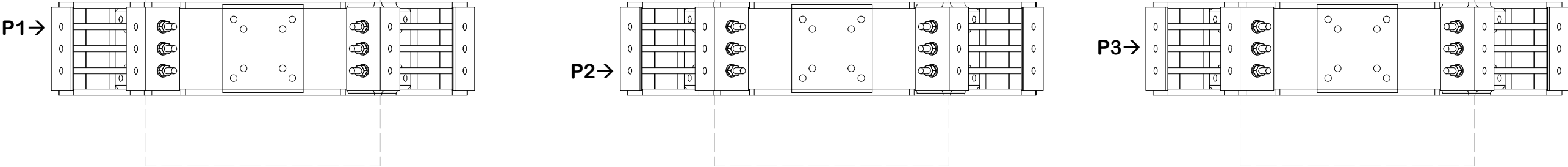
NOTE:

ENSURE EQUAL DISTANCE
BETWEEN BRACKETS "X"
AND AT 120° APART

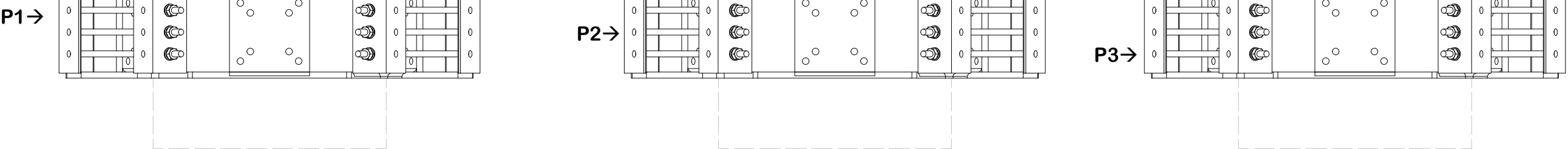


					<div>TOLERANCE NOTES</div> <div>TOLERANCES ON DIMENSIONS, UNLESS OTHERWISE NOTED ARE: SAWED, SHEARED AND GAS CUT EDGES ($\pm 0.030''$) DRILLED AND GAS CUT HOLES ($\pm 0.030''$) - NO CONING OF HOLES LASER CUT EDGES AND HOLES ($\pm 0.010''$) - NO CONING OF HOLES BENDS AND ANGLES ARE $\pm 1/2$ DEGREE ALL OTHER MACHINING ($\pm 0.030''$) ALL OTHER ASSEMBLY ($\pm 0.060''$)</div>			<div>DESCRIPTION</div> <div>MONOPOLE SECTOR FRAME ATTACHMENT ASSEMBLY</div>			<div><div><div>SITE PRO</div><div>1</div></div><div>Engineering Support Team: sp1engineering@valmont.com</div></div> <div>A valmont  COMPANY</div>				
B	UPDATED TEMPLATE				SP1	CSL	9/5/2024	CPD NO.	DRAWN BY		ENG. APPROVAL		PART NO.		5 OF 7 PAGE
A	REDRAWN IN INV, UPDATED TABLES AND VIEW				SP1	KC8	7/25/2012	PATENT INFORMATION: WWW.SITEPRO1.COM/PATENTS			SP1	CMFL 9/5/2024	9/5/2024	LWRM	
REV	DESCRIPTION OF REVISIONS				CPD	BY	DATE	PROPRIETARY NOTE: THE DATA AND TECHNIQUES CONTAINED IN THIS DRAWING ARE PROPRIETARY INFORMATION OF VALMONT INDUSTRIES AND CONSIDERED A TRADE SECRET. ANY USE OR DISCLOSURE WITHOUT THE CONSENT OF VALMONT INDUSTRIES IS STRICTLY PROHIBITED.			CLASS 87	SUB 02	DRAWING USAGE SHOP	CHECKED BY JET 9/5/2024	
REVISION HISTORY															

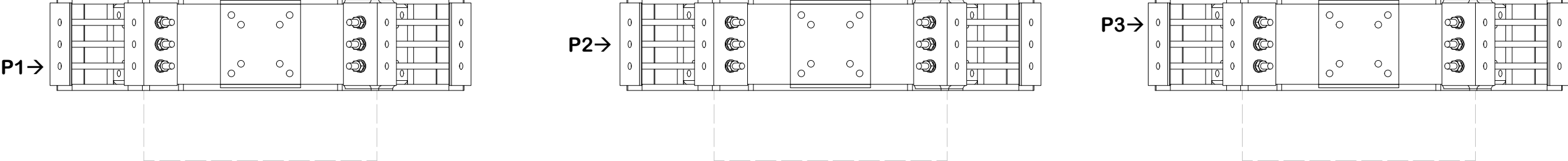
INSTALL ORDER




INITIAL TIGHTENING

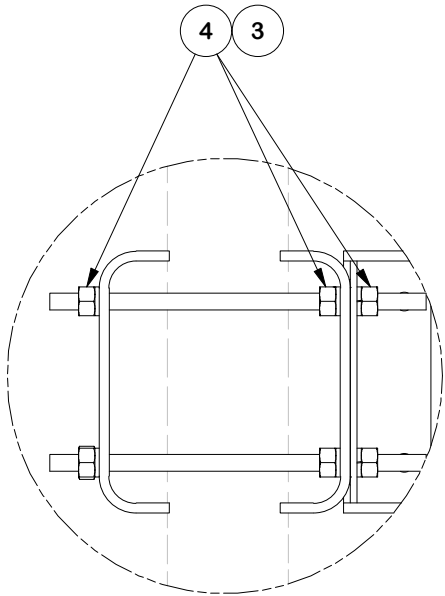
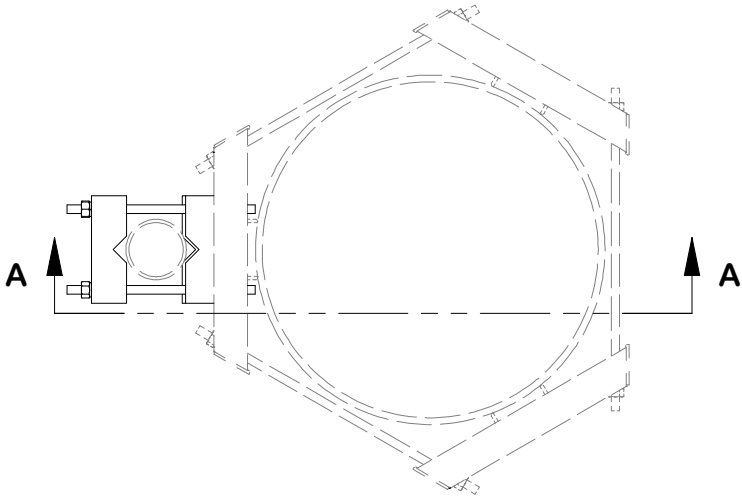


FINAL TIGHTENING

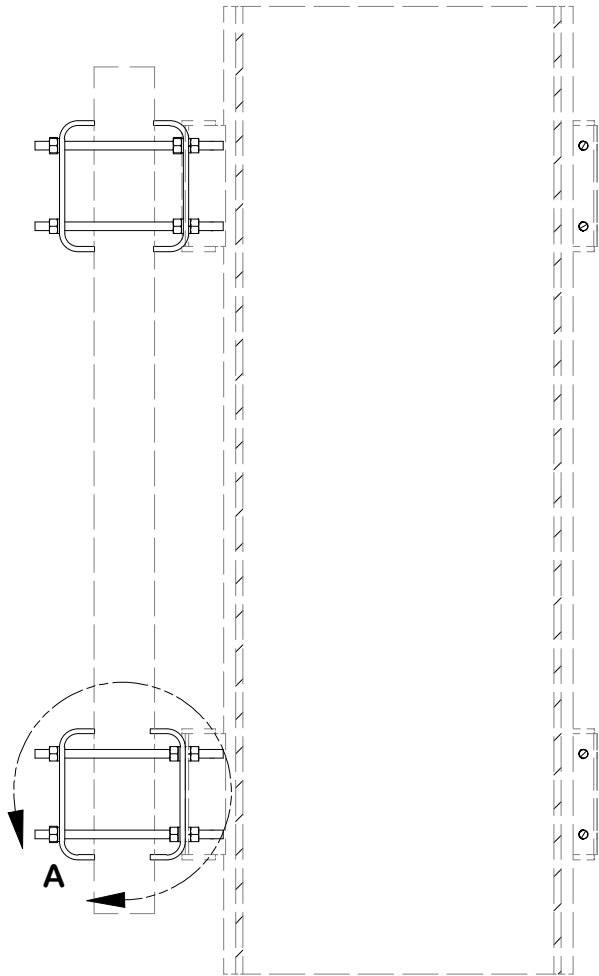


					<div>TOLERANCE NOTES</div> <div>TOLERANCES ON DIMENSIONS, UNLESS OTHERWISE NOTED ARE: SAWED, SHEARED AND GAS CUT EDGES ($\pm 0.030''$) DRILLED AND GAS CUT HOLES ($\pm 0.030''$) - NO CONING OF HOLES LASER CUT EDGES AND HOLES ($\pm 0.010''$) - NO CONING OF HOLES BENDS AND ANGLES ARE $\pm 1/2$ DEGREE ALL OTHER MACHINING ($\pm 0.030''$) ALL OTHER ASSEMBLY ($\pm 0.060''$)</div>		<div>DESCRIPTION</div> <div>MONOPOLE SECTOR FRAME ATTACHMENT ASSEMBLY</div>			<div><div><div>SITE PRO</div><div>1</div></div><div>Engineering Support Team: sp1engineering@valmont.com</div></div> <div>A valmont  COMPANY</div>		
B	UPDATED TEMPLATE		SP1	CSL	9/5/2024	PATENT INFORMATION: WWW.SITEPRO1.COM/PATENTS		CPD NO. SP1	DRAWN BY CMFL 9/5/2024	ENG. APPROVAL 9/5/2024	PART NO. LWRM	PAGE 6 OF 7
A	REDRAWN IN INV, UPDATED TABLES AND VIEW		SP1	KC8	7/25/2012			CLASS 87	SUB 02	DRAWING USAGE SHOP	CHECKED BY JET 9/5/2024	
REV	DESCRIPTION OF REVISIONS		CPD	BY	DATE	PROPRIETARY NOTE: THE DATA AND TECHNIQUES CONTAINED IN THIS DRAWING ARE PROPRIETARY INFORMATION OF VALMONT INDUSTRIES AND CONSIDERED A TRADE SECRET. ANY USE OR DISCLOSURE WITHOUT THE CONSENT OF VALMONT INDUSTRIES IS STRICTLY PROHIBITED.				DWG. NO. MSFAA		
REVISION HISTORY												

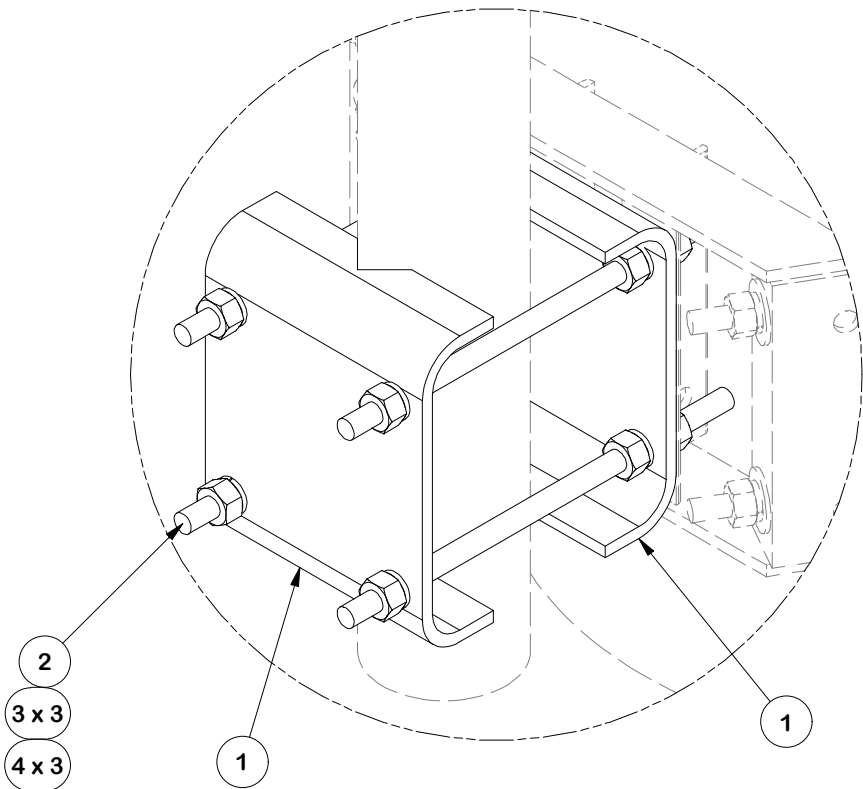
PARTS LIST					
ITEM	QTY	PART NO.	PART DESCRIPTION	LENGTH	UNIT WT.
1	4	X-214130	BENT PLATE V-CLAMP	12 5/8 in	11.43
2	8	G58R-14	5/8" x 14" THREADED ROD (HDG.)		1.22
3	24	G58LW	5/8" HDG LOCKWASHER		0.03
4	24	G58NUT	5/8" HDG HEAVY 2H HEX NUT		0.13
TOTAL WT. #					57.05



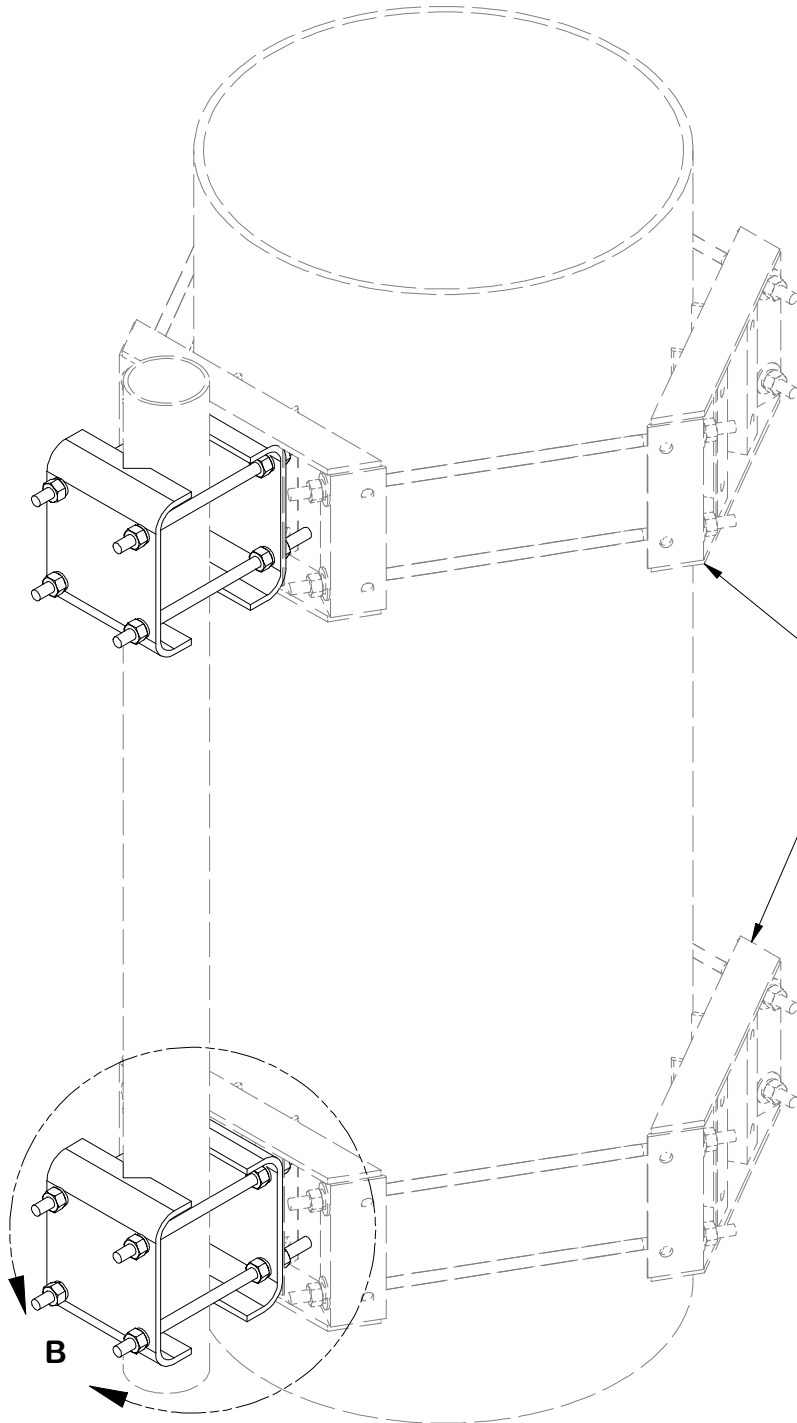
DETAIL A



SECTION A-A



DETAIL B



LWRM UNIVERSAL RING MOUNT
FOR POLES 12" TO 45" DIA.
(ORDERED SEPARATELY)

OR

UGLM
MINI RING MOUNT
FOR POLES 10-1/2" TO 28" DIA.
(ORDERED SEPARATELY)

					<div>TOLERANCE NOTES</div> <div>TOLERANCES ON DIMENSIONS, UNLESS OTHERWISE NOTED ARE: SAWED, SHEARED AND GAS CUT EDGES (± 0.030") DRILLED AND GAS CUT HOLES (± 0.030") - NO CONING OF HOLES LASER CUT EDGES AND HOLES (± 0.010") - NO CONING OF HOLES BENDS AND ANGLES ARE ± 1/2 DEGREE ALL OTHER MACHINING (± 0.030") ALL OTHER ASSEMBLY (± 0.060")</div>		<div>DESCRIPTION</div> <div>MONOPOLE SECTOR FRAME ATTACHMENT ASSEMBLY</div>			<div><div><div>SITE PRO 1</div><div>Engineering Support Team: sp1engineering@valmont.com</div></div><div>A valmont COMPANY</div></div>									
A	UPDATED TEMPLATE				SP1	CSL	9/5/2024	PATENT INFORMATION: WWW.SITEPRO1.COM/PATENTS			CPD NO. SP1	DRAWN BY CMFL 9/5/2024		ENG. APPROVAL 9/5/2024		PART NO. FMA2		7 OF 7 PAGE	
REV	DESCRIPTION OF REVISIONS				CPD	BY	DATE	PROPRIETARY NOTE: THE DATA AND TECHNIQUES CONTAINED IN THIS DRAWING ARE PROPRIETARY INFORMATION OF VALMONT INDUSTRIES AND CONSIDERED A TRADE SECRET. ANY USE OR DISCLOSURE WITHOUT THE CONSENT OF VALMONT INDUSTRIES IS STRICTLY PROHIBITED.			CLASS 87	SUB 02	DRAWING USAGE SHOP		CHECKED BY JET 9/5/2024		DWG. NO. MSFAA		
REVISION HISTORY																			